

# Oncology On Canvas

## Expressions of a Cancer Journey

In honor of the compelling and revealing art exhibit, Oncology On Canvas: Expressions of a Cancer Journey, the RMC Foundation is hosting a preview party on Monday, November 9, at 6 p.m. to 8:00 p.m. at the Tyler Center. RMC will feature the display from November 10-13 at the Cancer Resource Center located in the Physician's Office Building, Suite 406.

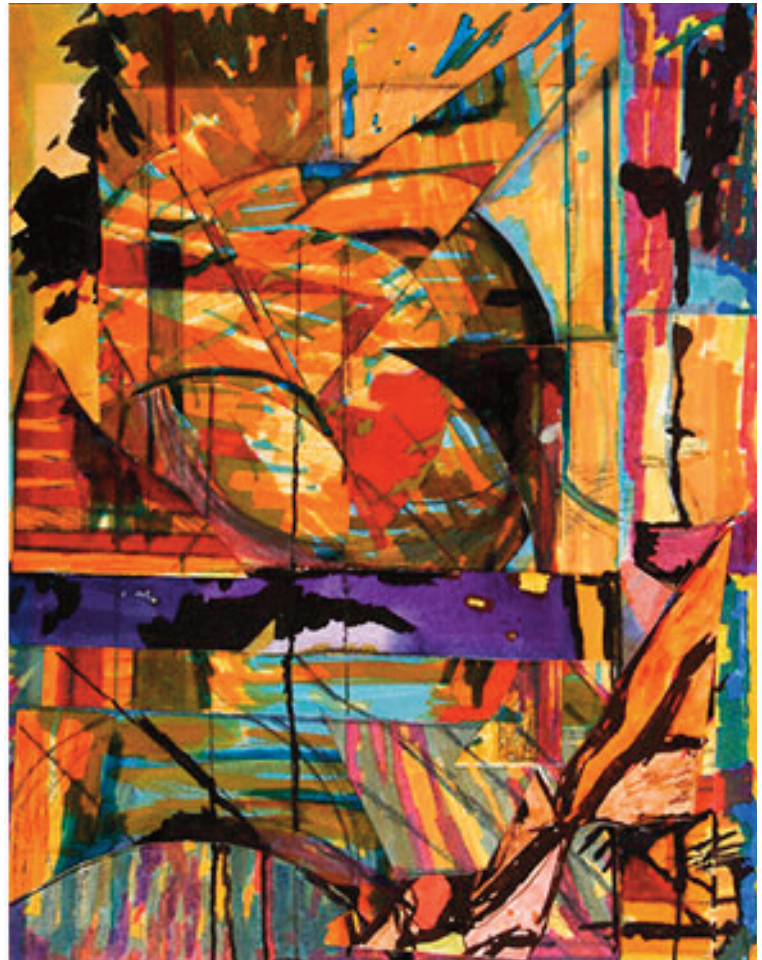
Oncology On Canvas: Expressions of a Cancer Journey is an international art exhibit that honors the journeys people face when confronted with a cancer diagnosis. Sponsored by Lilly USA and the National Coalition for Cancer Survivorship, the competition features art created by cancer patients, their families, friends, caregivers and health care providers. Through creativity and narrative, the art expresses the life-affirming changes and journeys of people affected by cancer.

### Preview Party

Hosted by RMC Memorial Foundation  
\$25 Donation Suggested Supporting the  
Thomas W. Twele, MD Memorial Oncology Fund  
Monday November 9, 2009  
6:00 p.m. to 8:00p.m., Tyler Center  
For Information: 256-235-5147

### Exhibition Viewing

November 10-13  
RMC Physicians Office Building  
Cancer Resource Center, Suite 406  
901 Leighton Avenue, Anniston, AL  
256-235-5084



**Best of the Overall Art Competition-Third Prize  
Moons in the Wind**

Oncology Making science personal.

