

Follow the steps below to install, configure and connect to the RMC Horizon Remote Application Portal.

Download the VMware Horizon Client

1. Open your internet browser and browse to <https://view.rmccares.org/>
2. Click on "Install VMware Horizon Client" to be redirected to the download page.



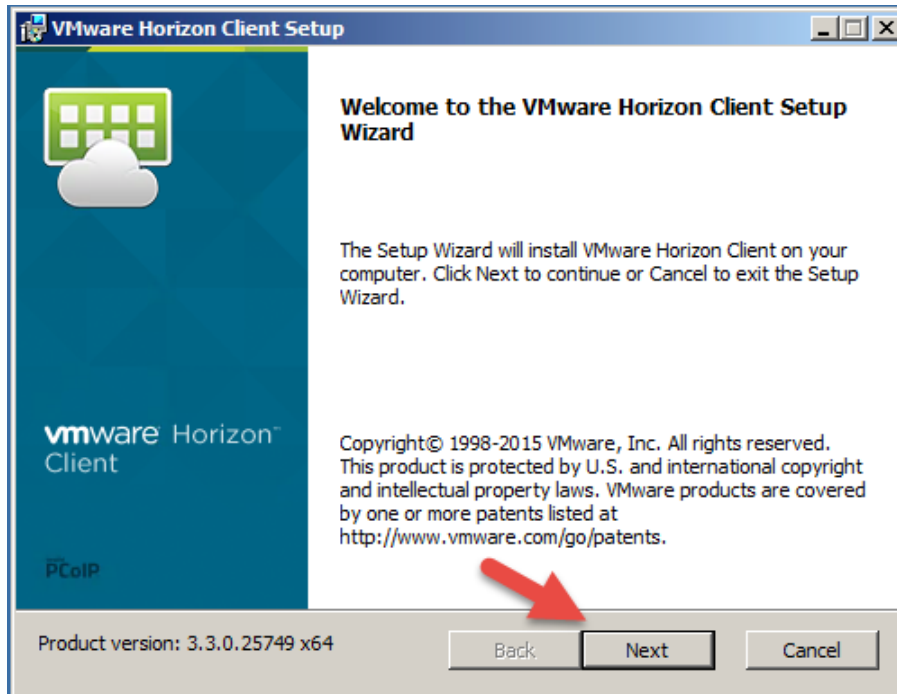
3. From the VMware site, choose the appropriate version of the client for your operating system.

Product Downloads	Drivers & Tools	Open Source	Custom ISOs
Product		Release Date	
▼ VMware Horizon Client for Windows			
VMware Horizon Client for 32-bit Windows	←	2015-06-04	Go to Downloads
VMware Horizon Client for 64-bit Windows		2015-06-04	Go to Downloads
▼ VMware Horizon View Client for Windows with Local Mode Option			
VMware Horizon View Client for 32-bit Windows with Local Mode Option		2015-06-04	Go to Downloads
VMware Horizon View Client for 64-bit with Local Mode Option		2015-06-04	Go to Downloads
▼ VMware Horizon Client for Mac			

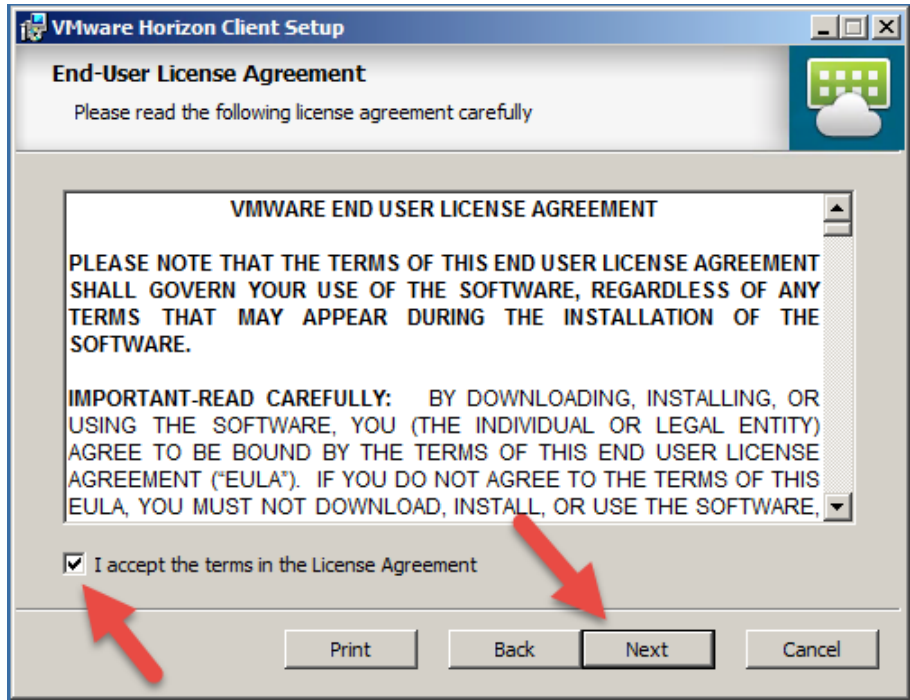
4. For Windows users install **VMware Horizon Client for Windows**, (see image above).
5. **Do Not install the VMware Horizon Client for Windows with Local Mode Option**

Install the VMware Horizon Client

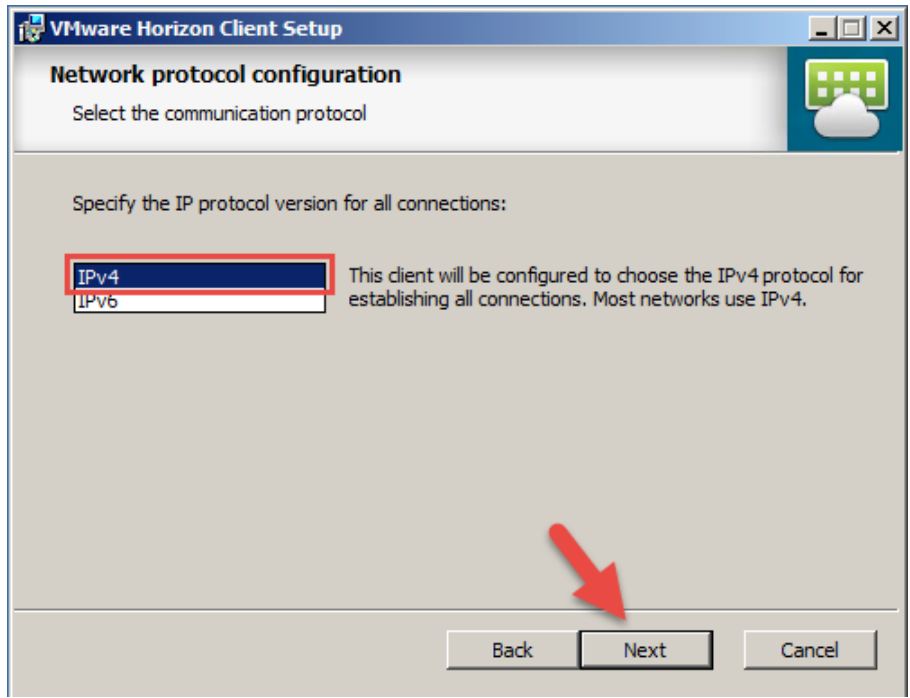
1. Start the VMware Horizon Client setup application.
2. The Welcome window will display, (see image below).



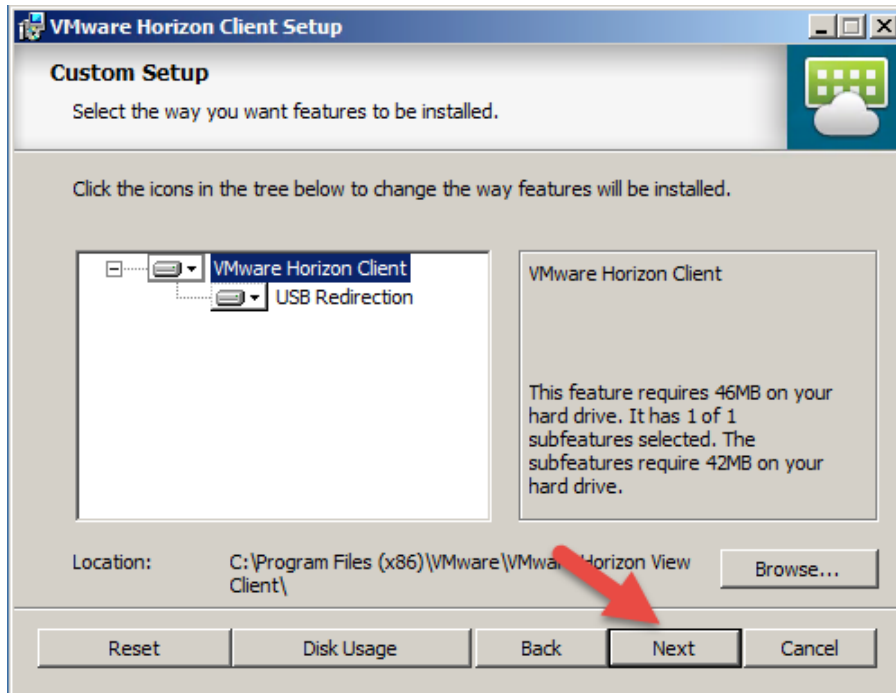
3. Click the **Next** button
4. The End-User License Agreement window will display, (see image below).



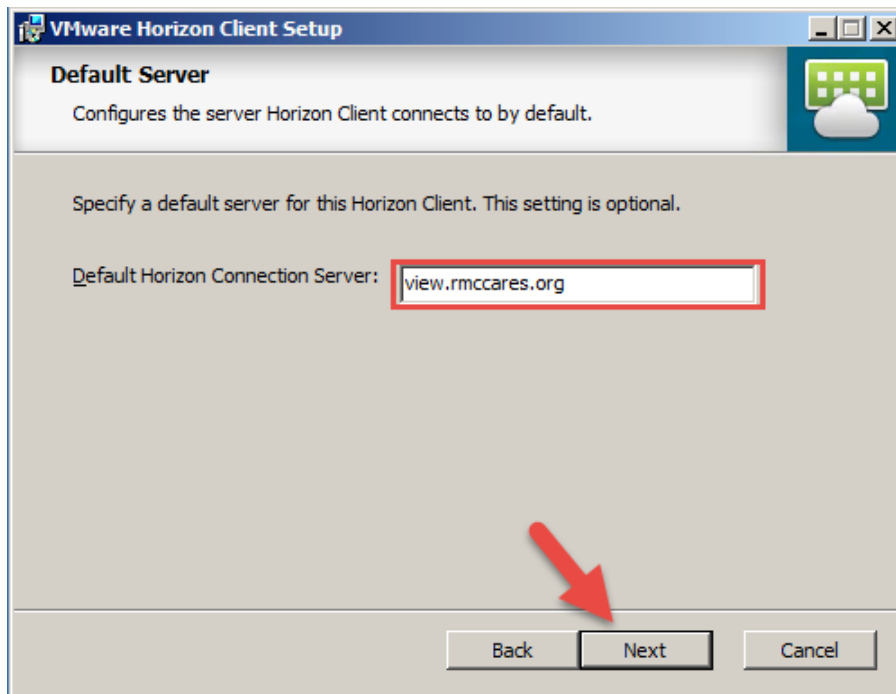
- 6. Click the checkbox next to **I accept the terms of the License Agreement**.
- 7. Click the **Next** button
- 8. The Network protocol configuration window will display, (see image below).



- 9. Ensure that **IPv4** is highlighted (selected) as the IP protocol.
- 10. Click the **Next** button.
- 11. The Custom Setup window will display, (see image below).

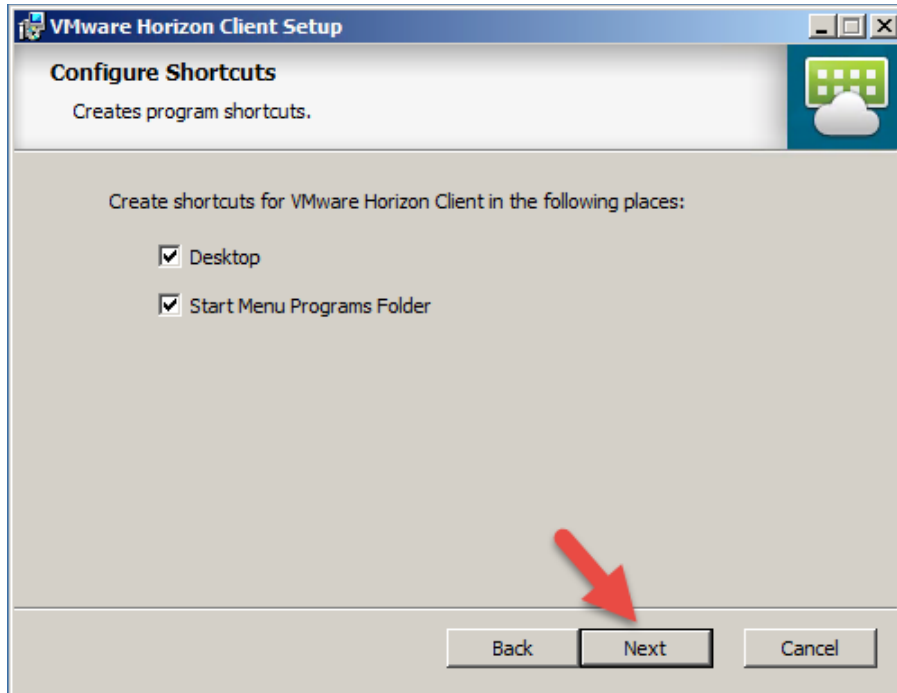


- 12. Leave the default settings.
- 13. Click the **Next** button.
- 14. The Default Server window will display, (see image below).



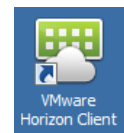
- 15. Populate the **Default Horizon Connection Server** field with **view.rmccares.org**

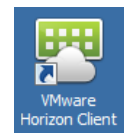
16. See image above as a reference.
17. Click the **Next** button.
18. The Configure Shortcuts window will display, (see image below).



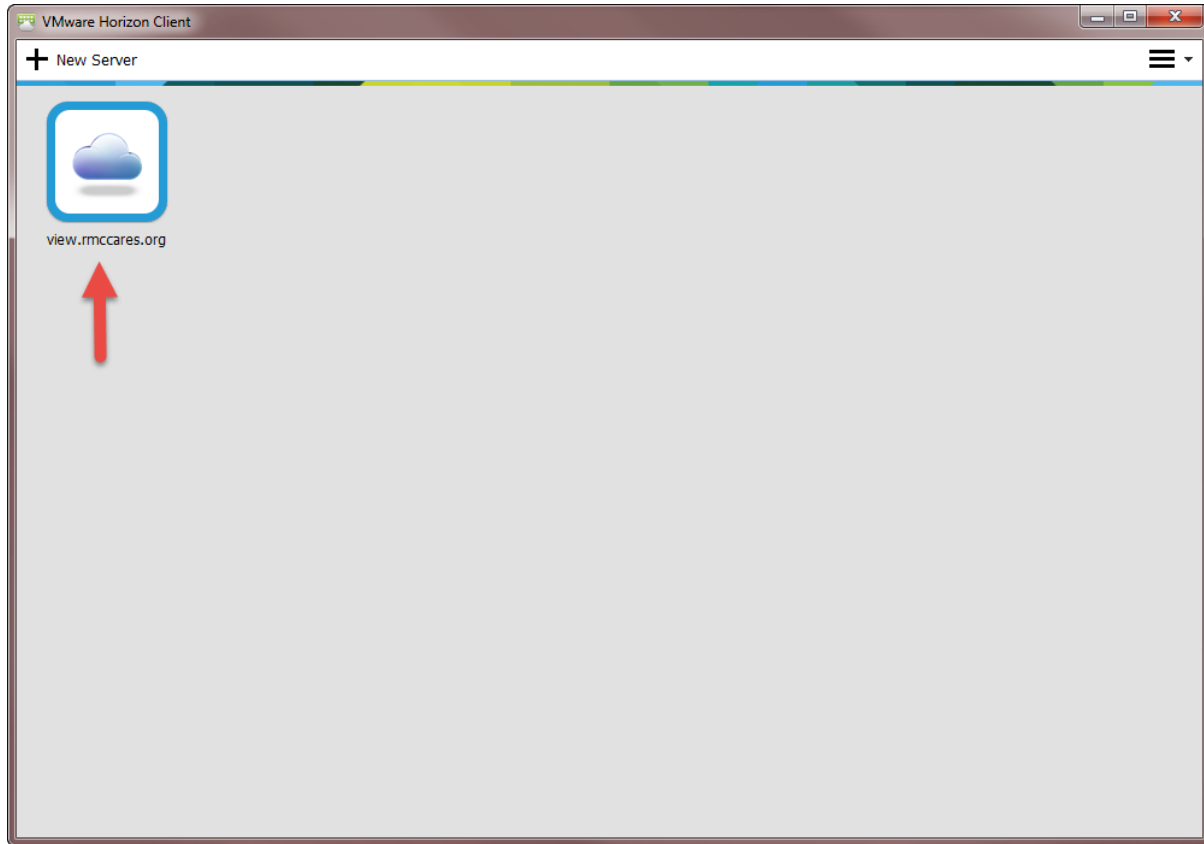
19. Leave the defaults selected and click the **Next** button.
20. The Ready to Install window will display.
21. Click the **Install** button.
22. Let the install complete and close the install application when completed.

Starting and running the VMware Horizon Client

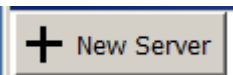


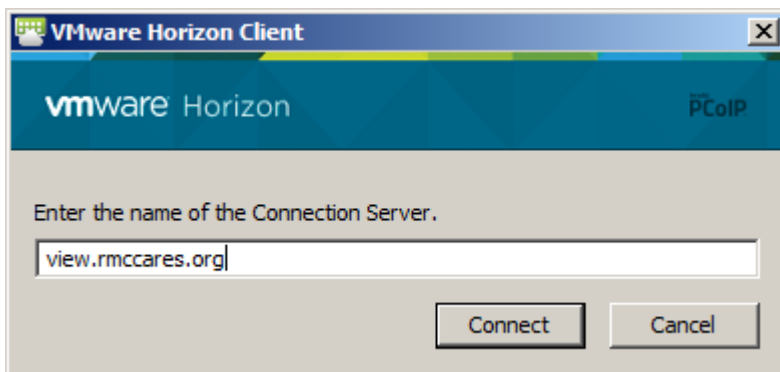
Once the Horizon View client is installed you should see an icon that looks similar to this  on your desktop. Follow the steps below to launch and configure the Horizon View Client.

1. Double click the Horizon View Client icon to start the view client.
2. The application window will display. See image below.

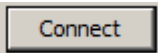


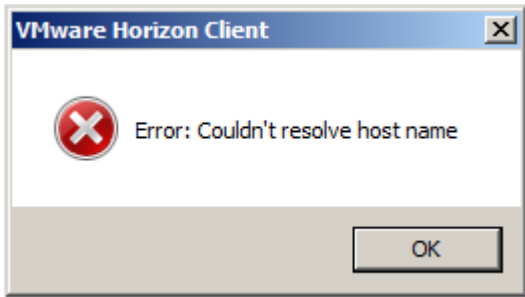
- 3. If the **view.rmccares.org** connection server displays in the View client, (see image above), skip to step 5 below and login.
- 4. If the **view.rmccares.org** connection server does not display in the View client you will need to add the connection server. Follow the steps below to create a new connection server.

- a) Click the  button at the top of the window.
- b) The Connection Server window will display.
- c) Enter the following connection string in the text box, **view.rmccares.org**



- d) Verify you entered the **Connection Server** name so that it matches the image above.

- e) Click the  button
- f) The View client will attempt connection to the server.
- g) If you get an error similar to the image below, you have entered the name of the connection server incorrectly. Click the OK button and attempt the steps above again.

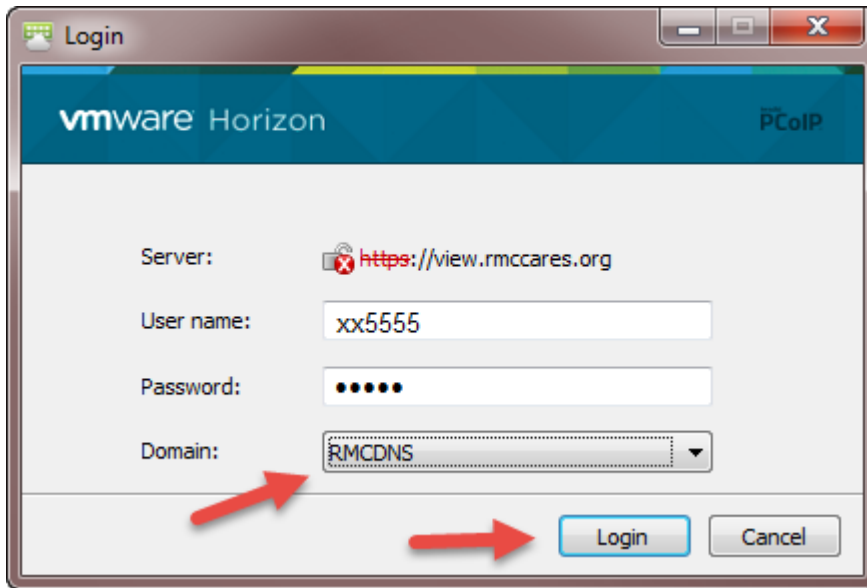


- 5. If the Connection Server was entered correctly and a successful connection made, the Disclaimer window will display.



- 6. Click the **Accept** button
- 7. The Login window will display.

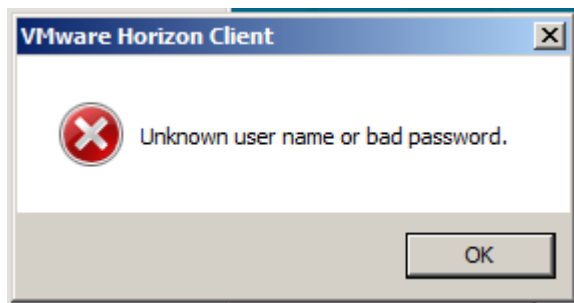
- 8. Enter the User name and Password that was provided to you. If you are an RMC employee this will be the same User name and password you use for Paragon, Webmail, etc..
- 9. Ensure the Domain is set to **RMCDNS**, (see image below).



- 10. Click the **Login** button

Note:

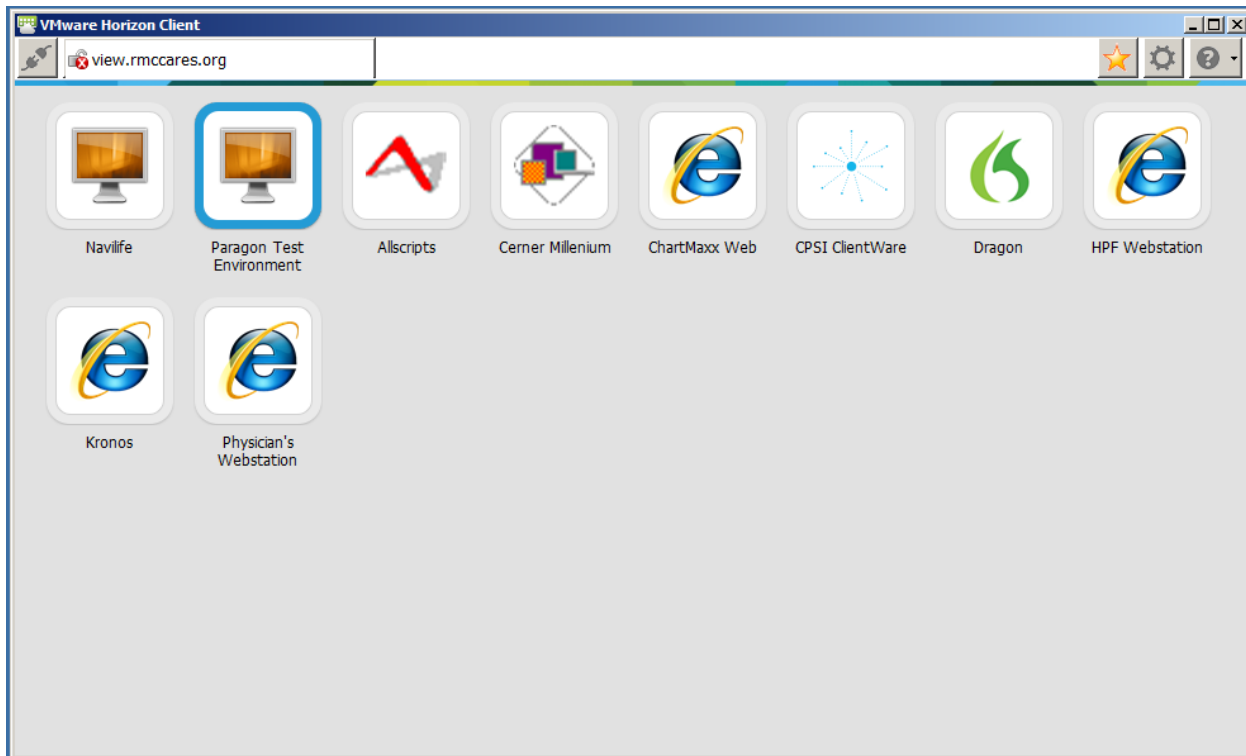
The View client will attempt to authenticate your user credentials. If you get a message similar to the image below, you have entered the user credentials incorrectly.



Click the OK button and re-enter your User name and Password.

Ensure the Domain is set to RMCDNS

- 11. If the user credentials were authenticated successfully, the View client window will populate with the applications and virtual desktops that you have access to. See image below **ONLY** as an example.




12. Double click any of the application or desktop icons to utilize that resource.

- If a Desktop resource is selected a full virtual desktop will be presented with the applications that are associated with that desktop.
- If an application resource is selected, the application will open and run similar to applications loaded on your physical desktop.

Note:

If you are using a desktop resource, please ensure you logoff or shutdown the desktop once you are done.

13. When done, click the  icon at the top of the View client window to disconnect from the Connection server.